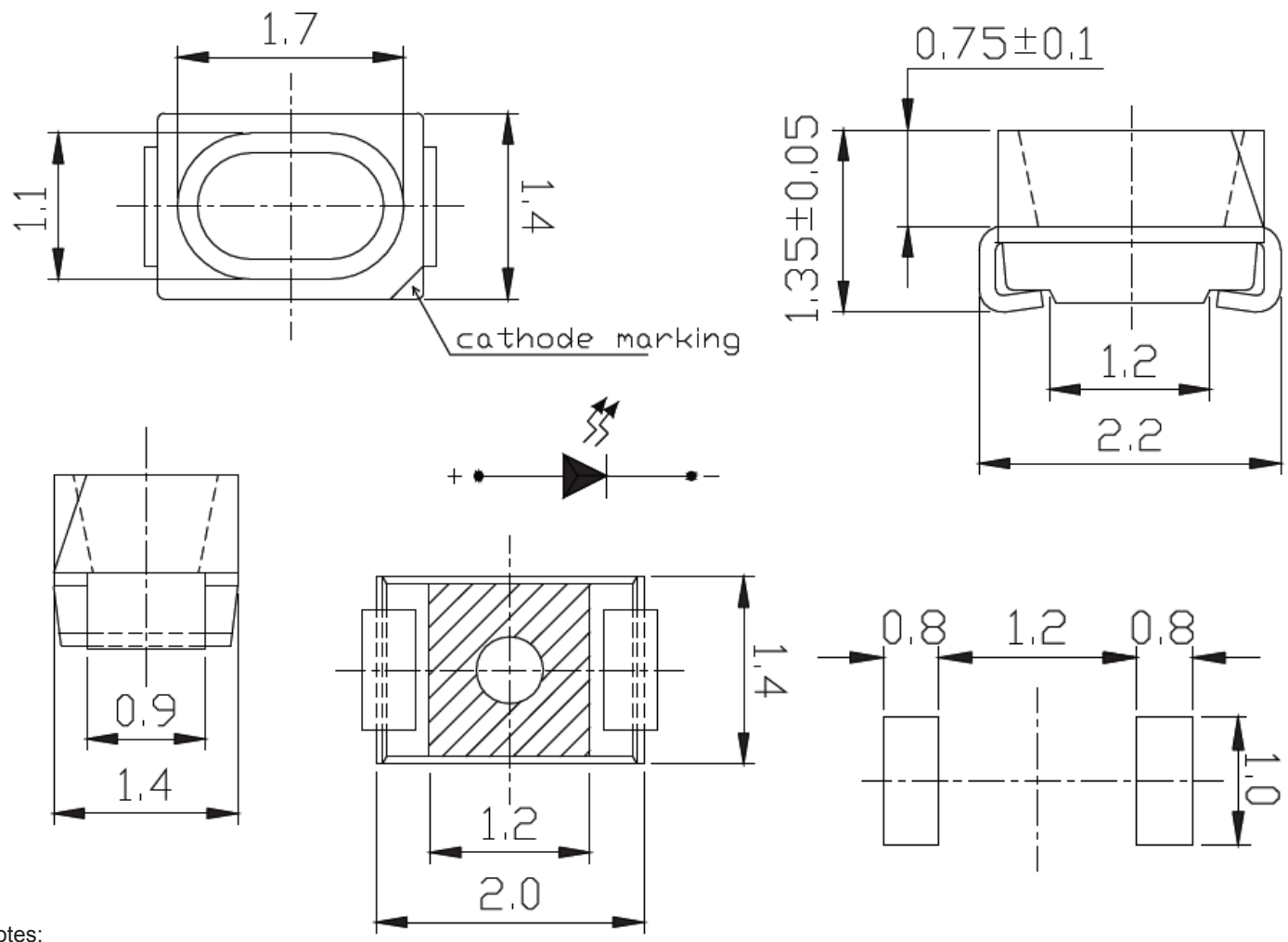


**SPECIFICATION** **CSP75B2C**
**PACKAGE OUTLINES**


- Notes:
1. All dimensions are in millimeters (inches).
  2. Tolerance is ± 0.25mm (0.01") unless otherwise noted.
  3. Specifications are subject to change without notice.

Part Number	Chip Material	Color of Emission	Lens Type	Viewing Angle
CSP75B2C	InGaN	Blue	Water Clear	120°



ChromeLED Corp. reserves the right to make changes at any time in order to supply the best product possible. The most current version of this document will always be available at: [www.chromeled.com](http://www.chromeled.com)

**ABSOLUTE MAXIMUM RATINGS**
**(TA=25°C)**

Parameter	Symbol	Max Rating	Unit
Forward Current	IF	30	mA
Reverse Voltage	VR	5	V
Operating Temperature Range	TOP	-40~+85	°C
Storage Temperature Range	TSTG	-40~+90	°C
Peak Pulsing Current (1/10 duty f = 10KHz)	IFP	100	mA
Power Dissipation	PD	110	mW
Soldering Temperature	TSOL	Max 260°C for 10 sec Max	

**OPTICAL-ELECTRICAL CHARACTERISTICS**
**(TA=25°C)**

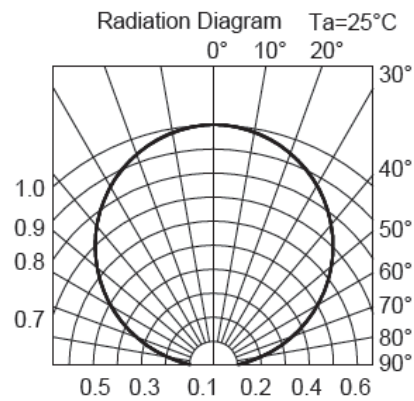
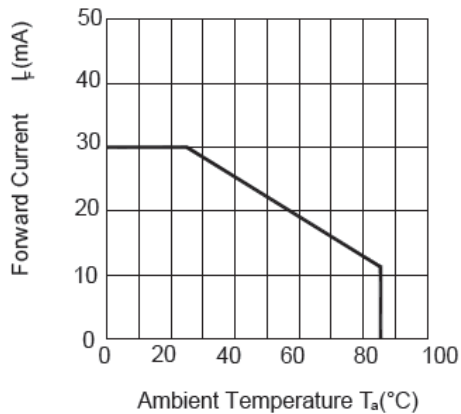
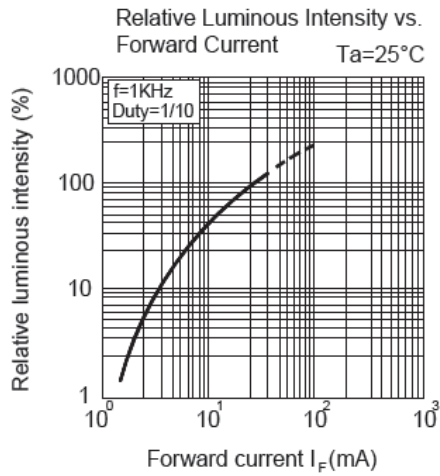
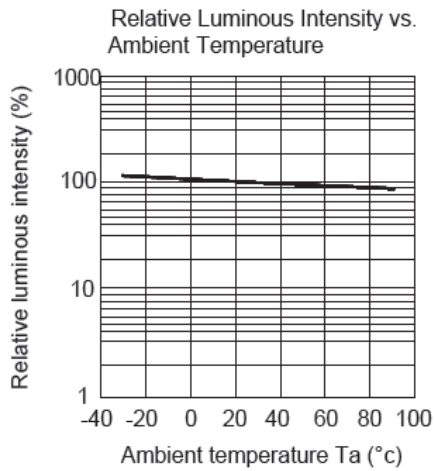
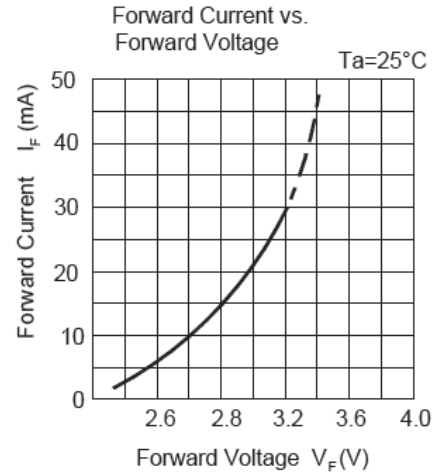
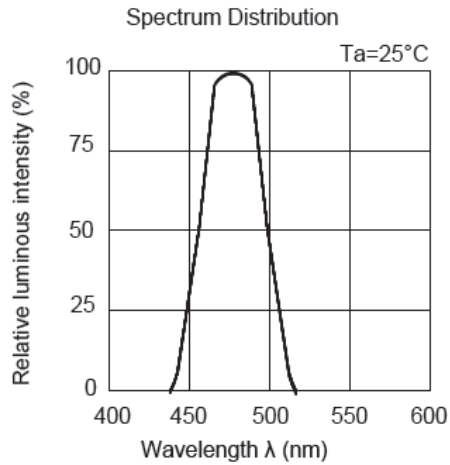
Parameter	Symbol	Test Condition	Value			Unit
			Min	Typ	Max	
Luminous Intensity	Iv	IF = 20mA	180	270	-	mcd
Forward Voltage	VF	IF = 20mA	-	3.1	3.5	V
Viewing Angle at 50% Iv	2θ1/2	IF = 20mA	-	120	-	Deg
Dominant Wavelength	λD	IF = 20mA	464	470	472	nm
Peak Wavelength	λP	IF = 20mA	-	468	-	nm

\*Tolerance of viewing angle: -10 / +5 deg.



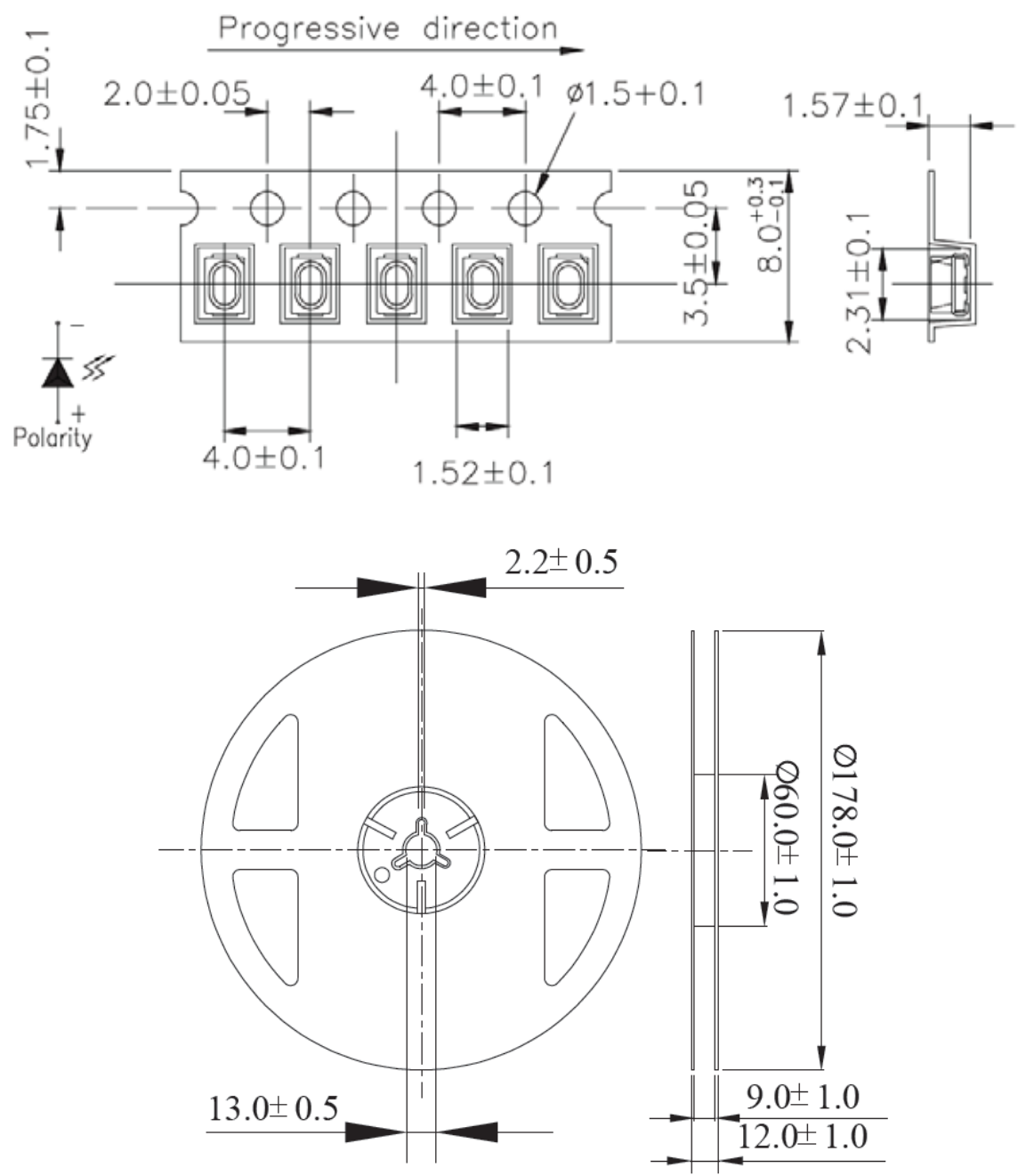
ChromeLED Corp. reserves the right to make changes at any time in order to supply the best product possible. The most current version of this document will always be available at: [www.chromeled.com](http://www.chromeled.com)

## OPTICAL CHARACTERISTIC CURVES



ChromeLED Corp. reserves the right to make changes at any time in order to supply the best product possible. The most current version of this document will always be available at: [www.chromeled.com](http://www.chromeled.com)

## PACKAGING SPECIFICATION



**Notes:**

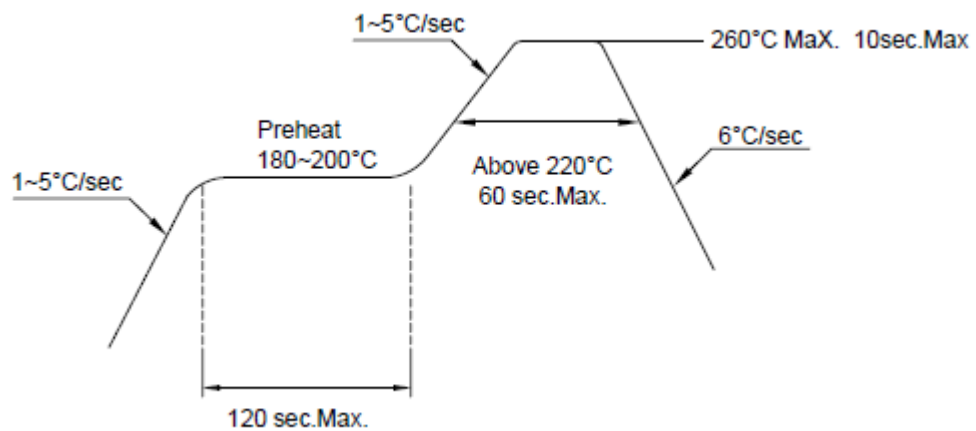
1. Tolerance unless mentioned is  $\pm 0.1$ mm, Angle  $\pm 0.5$ , Unit=mm.
2. 2000pcs / 7" Reel; 8.0mm Tape



ChromeLED Corp. reserves the right to make changes at any time in order to supply the best product possible. The most current version of this document will always be available at: [www.chromeled.com](http://www.chromeled.com)

## SOLDERING CONDITIONS

1. Hand Solder  
Basic spec is  $\leq 350\text{ }^{\circ}\text{C}$  3 sec one time only.
2. PB-Free Reflow Solder



- Reflow soldering should not be done more than two times.
- When soldering, do not put stress on LEDs during heating.
- After soldering, do not warp the circuit board.



ChromeLED Corp. reserves the right to make changes at any time in order to supply the best product possible. The most current version of this document will always be available at: [www.chromeled.com](http://www.chromeled.com)