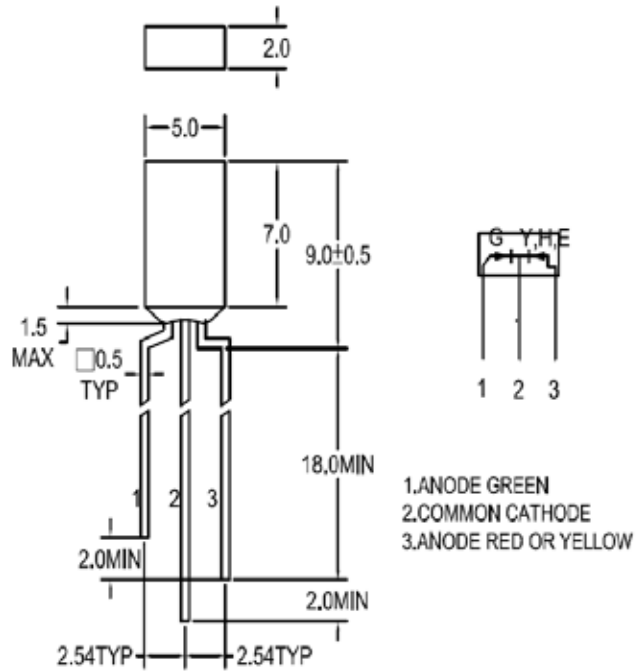


SPECIFICATION **CLB257R1G1WCC**
PACKAGE OUTLINES
Description

- *2.0mmX5.0mm Type Dual Color
- *Rectangular LED
- *Lens Color: White Diffused
- *Low Power Consumption

Features

- *Emitting Color: Red/Green
- *Standard Luminous Intensity
- *Technology: GaP
- *Dominant Wavelength = 635/565nm



1.ANODE GREEN
2.COMMON CATHODE
3.ANODE RED OR YELLOW

- Notes:
1. All dimensions are in millimeters (inches).
 2. Tolerance is ± 0.25mm (0.01") unless otherwise noted.
 3. Specifications are subject to change without notice.

Part Number	Chip Material	Color of Emission	Lens Type	Viewing Angle
CLB257R1G1WCC	GaP	Red	White Diffused	116°
	GaP	Green		



ChromeLED Corp. reserves the right to make changes at any time in order to supply the best product possible. The most current version of this document will always be available at: www.chromeled.com

ABSOLUTE MAXIMUM RATINGS
(TA=25°C)

Parameter	Symbol	Max Rating		Unit
		Red	Green	
Forward Current	I _F	20	30	mA
Peak Pulsing Current (1/10 duty f = 10KHz)	I _{FP}	60	120	mA
Power Dissipation	P _d	40	100	mW
Reverse Current @ 5V	I _R	10		μA
Operating Temperature Range	T _{OP}	-40~+85		°C
Storage Temperature Range	T _{STG}	-40~+100		°C
Soldering Temperature	T _{SOL}	Max 260°C for 5 sec Max		

OPTICAL-ELECTRICAL CHARACTERISTICS
(TA=25°C)

Parameter	Symbol	Test Condition	Color	Value			Unit
				Min	Typ	Max	
Luminous Intensity	I _v	I _F = 20mA	R	4	6	-	mcd
			G	4	6		
Forward Voltage	V _F	I _F = 20mA	R	-	2.1	2.4	V
			G	-	2.1	2.4	
Viewing Angle at 50% I _v	2θ _{1/2}	I _F = 20mA	-	-	116	-	Deg
Peak Wavelength	λ _P	I _F = 20mA	R	-	635	-	nm
			G		568		
Dominant Wavelength	λ _D	I _F = 20mA	R	-	630	-	nm
			G		565		

*Tolerance of viewing angle: -10 / +5 deg.



ChromeLED Corp. reserves the right to make changes at any time in order to supply the best product possible. The most current version of this document will always be available at: www.chromeled.com