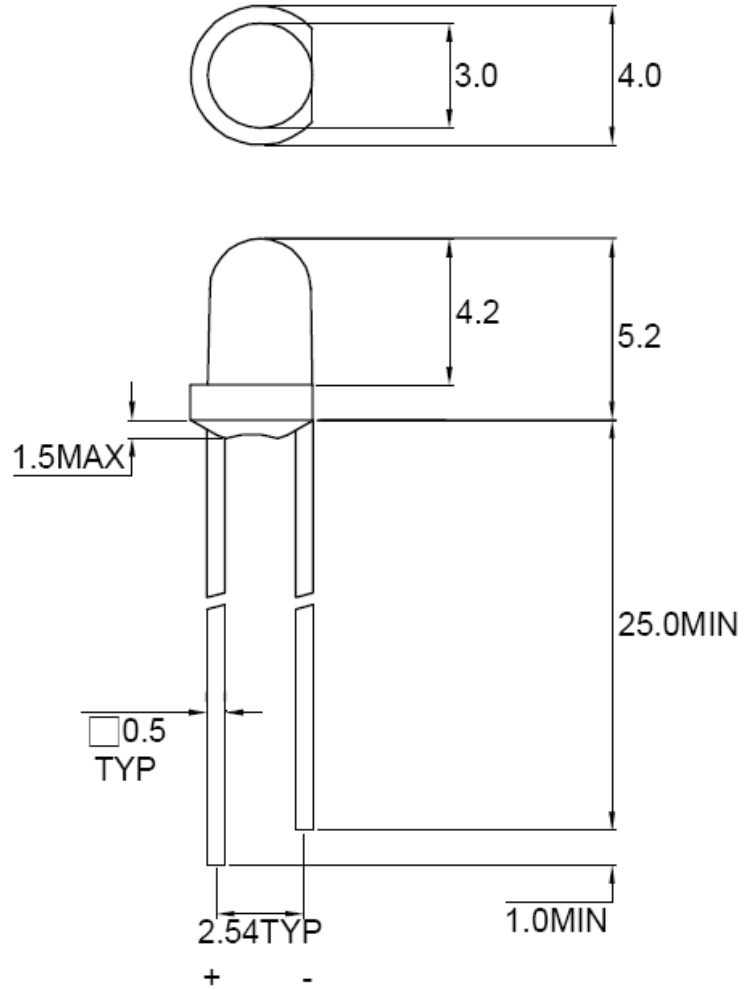


SPECIFICATIONS
CL30G1T
OUTLINES DIMENSIONS
DESCRIPTION

- Round type
- T1 (3mm) diameter
- Lens color: Green Transparent
- With flange
- Solder leads without stand-off

FEATURES

- Emitted color: Green
- Technology: GaP
- Viewing angle: 30°
- Peak wavelength $\lambda_p = 565\text{nm}$


Notes:

1. All Dimensions are in millimeters (inches).
2. Tolerance is $\pm 0.25\text{mm}$ (0.01") unless otherwise noted.
3. Specifications are subject to change without notice.

Part Number	Chip Material	Color of Emission	Lens Type	Viewing Angle
CL30G1T	GaP	Green	Green Tinted	30°



ChromeLED Corp. reserves the right to make changes at any time in order to supply the best product possible. The most current version of this document will always be available at: www.chromeled.com

ABSOLUTE MAXIMUM RATINGS (TA=25°C)

Parameter	Symbol	Max Rating	Unit
Power Dissipation	P _D	50	mW
Pulse Current Forward Current	I _{FP}	80	mA
Continuous Forward Current	I _F	30	mA
Reverse Voltage	V _R	5	V
Operating Temperature Range	T _{OPR}	-40~+85	°C
Storage Temperature Range	T _{STG}	-40~+100	°C
I _{FP} = Pulse Width ≤ 10 ms, Duty Ratio ≤ 1/10. Soldering Condition: 260 °C/ 5sec			

OPTICAL-ELECTRICAL CHARACTERISTICS (TA=25°C)

Parameter	Symbol	Test Condition	Value			Unit
			Min	Typ	Max	
Luminous Intensity	I _V	I _F = 20mA	20	35	-	mcd
Forward Voltage	V _F	I _F = 20mA	-	2.1	2.6	V
Reverse Leakage Current	I _R	V _R = 5V	-	-	10	μA
Viewing Angle	2θ _{1/2}	I _F = 20mA	-	30	-	deg
Dominant Wavelength	λ _D	I _F = 20mA	-	568	-	nm

*Tolerance of viewing angle: -10 / +5 deg.



ChromeLED Corp. reserves the right to make changes at any time in order to supply the best product possible. The most current version of this document will always be available at: www.chromeled.com

OPTICAL CHARACTERISTIC CURVES

Fig.1 Forward current vs. Forward Voltage

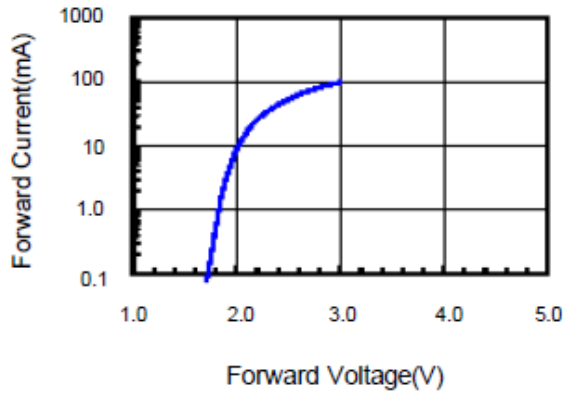


Fig.2 Relative Intensity vs. Forward Current

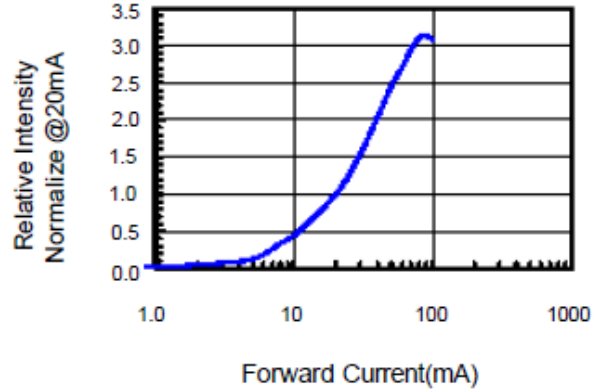


Fig.3 Forward Voltage vs. Temperature

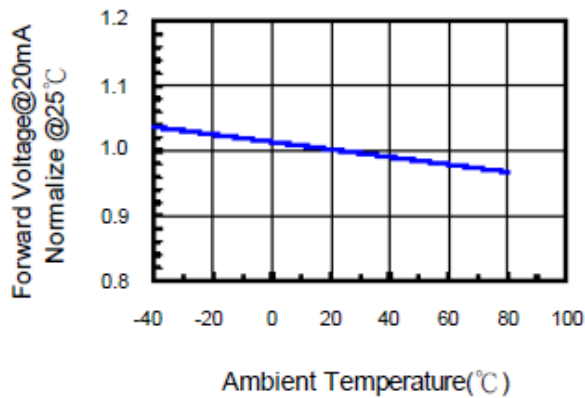


Fig.4 Relative Intensity vs. Temperature

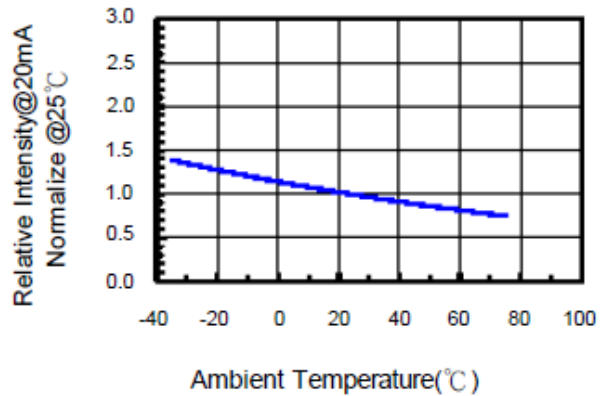


Fig.5 Relative Intensity vs. Wavelength

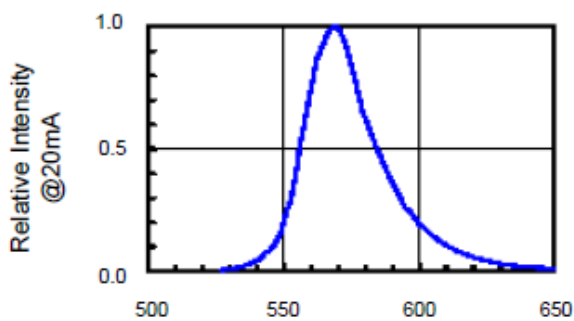


Fig.6 Directive Radiation



ChromeLED Corp. reserves the right to make changes at any time in order to supply the best product possible. The most current version of this document will always be available at: www.chromeled.com

SOLDERING CONDITIONS – LAMP TYPE LED

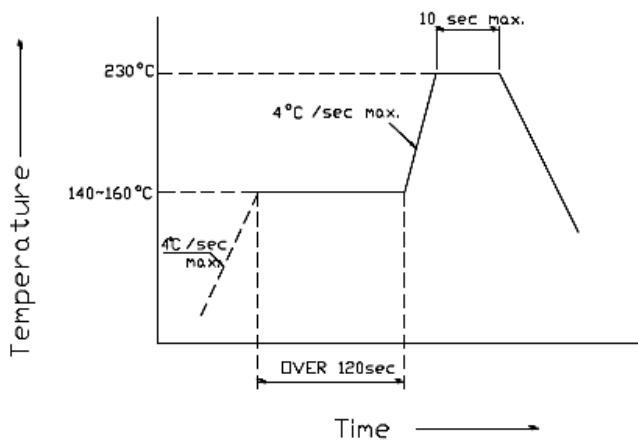
1. Soldering Conditions

Number of reflow process shall be less than 2 times and cooling process to normal temperature is required between first and second soldering process.

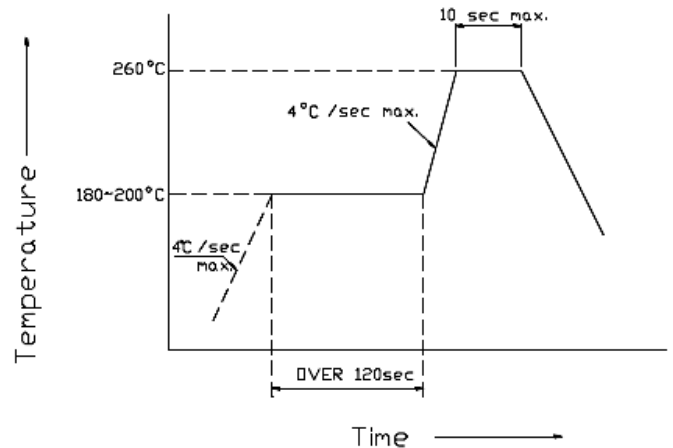
Recommended Soldering Conditions

Reflow Soldering			Hand Soldering	
	Lead Solder	Lead-Free Solder	Temperature	350°C max
Pre-heat	140~160°C	180~200°C	Soldering Time	3 sec. max. one time only
Pre-heat time	120 sec. max	120 sec. max		
Peak Temp.	230°C max	260°C max		
Soldering Time	10 sec. max	10 sec. max		
Condition	See below	See below		

(Lead Solder)



(Lead-Free Solder)



2. Static Electricity

It is recommended that a wrist band or an anti-electrostatic glove be used when handling LEDs. All devices, equipment and machinery must be properly grounded.

Damaged LED will show some unusual characteristics such as the forward voltage becomes lower, or the LEDs do not light at the low current. Criteria: $V_F > 2.0V @ I_F = 0.5mA$.



ChromeLED Corp. reserves the right to make changes at any time in order to supply the best product possible. The most current version of this document will always be available at: www.chromeled.com