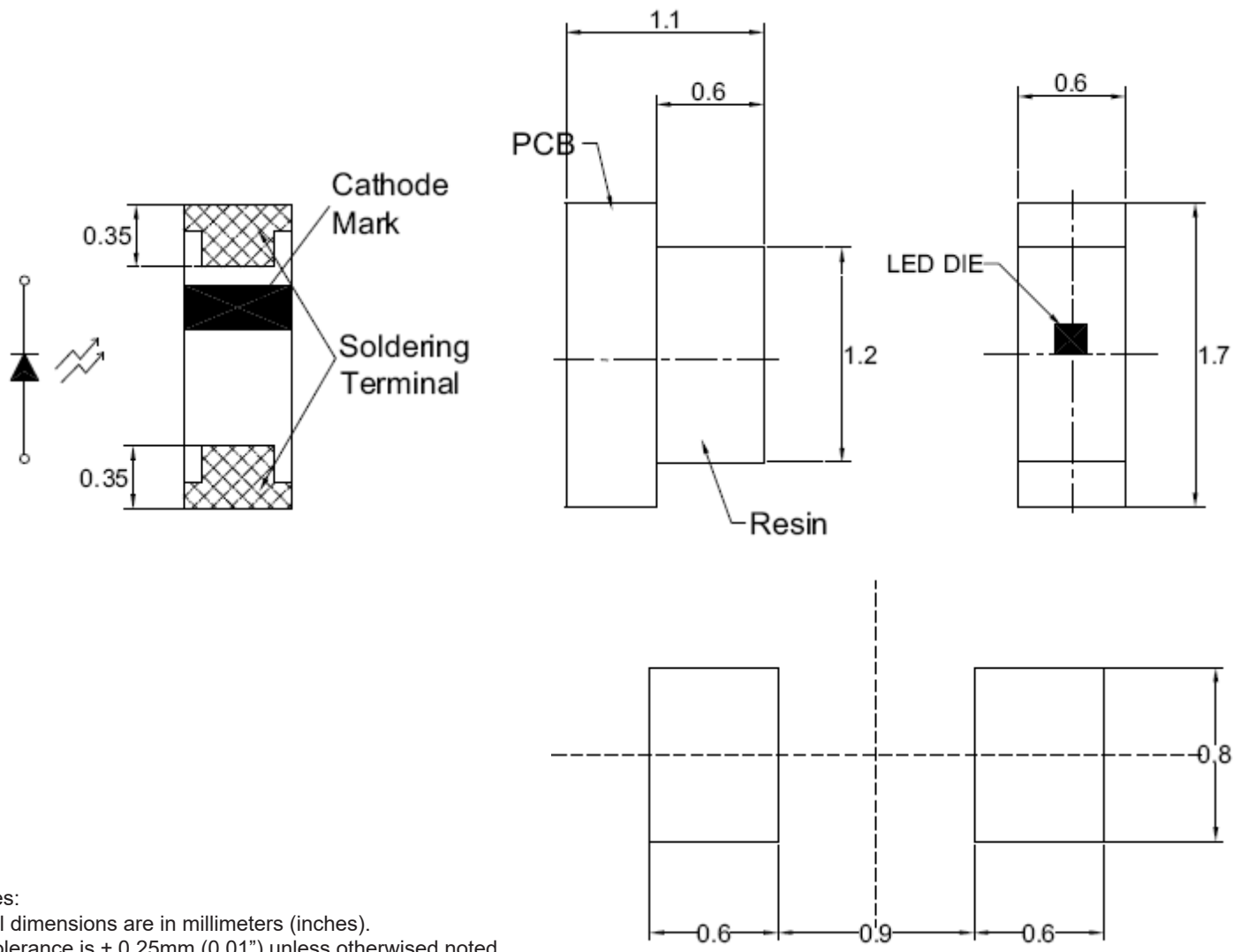


**SPECIFICATION** **CSR62Y2C**
**PACKAGE OUTLINES**


- Notes:
1. All dimensions are in millimeters (inches).
  2. Tolerance is  $\pm 0.25\text{mm}$  (0.01") unless otherwise noted.
  3. Specifications are subject to change without notice.

Part Number	Chip Material	Color of Emission	Lens Type	Viewing Angle
CSR62Y2C	InGaAlP	Yellow	Water Clear	130°



ChromeLED Corp. reserves the right to make changes at any time in order to supply the best product possible. The most current version of this document will always be available at: [www.chromeled.com](http://www.chromeled.com)

**ABSOLUTE MAXIMUM RATINGS**
**(TA=25°C)**

Parameter	Symbol	Max Rating	Unit
Forward Current	IF	25	mA
Reverse Current @ 5V	IR	10	μA
Power Dissipation	Pd	60	mW
Operating Temperature Range	TOP	-40~+85	°C
Storage Temperature Range	TSTG	-40~+90	°C
Peak Pulsing Current (1/10 duty f = 10KHz)	IFP	60	mA
Soldering Temperature	TSOL	Max 260°C for 5 sec Max	

**OPTICAL-ELECTRICAL CHARACTERISTICS**
**(TA=25°C)**

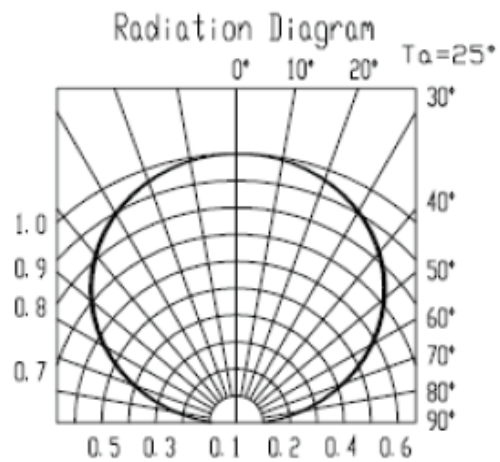
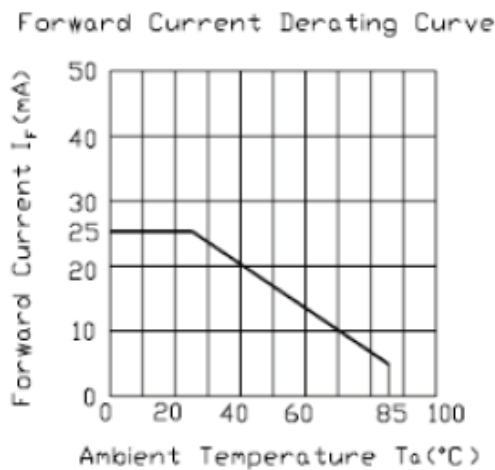
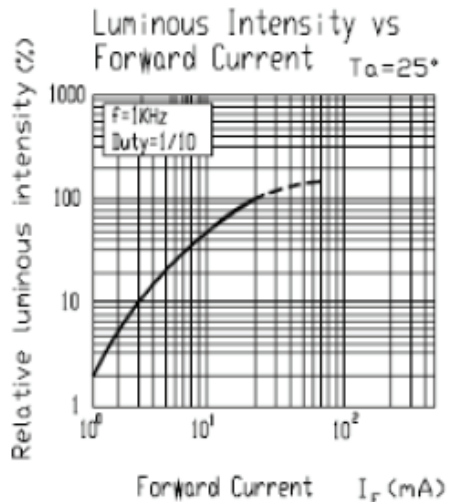
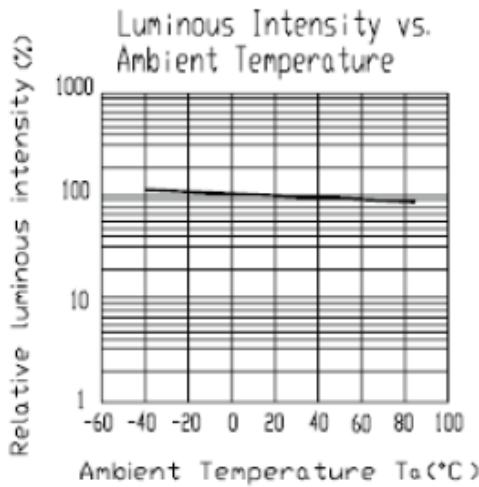
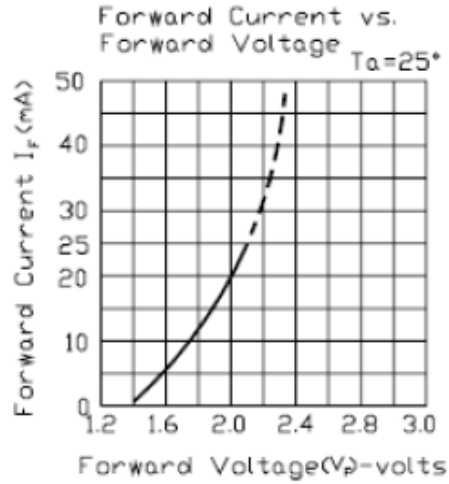
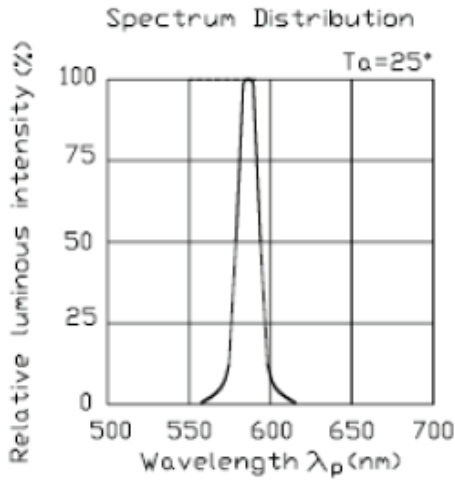
Parameter	Symbol	Test Condition	Value			Unit
			Min	Typ	Max	
Luminous Intensity	Iv	IF = 20mA	90	180	-	mcd
Forward Voltage	VF	IF = 20mA	-	2.0	2.4	V
Reverse Leakage Current	IR	VR = 5V	-	-	10	μA
Viewing Angle at 50% Iv	2θ1/2	IF = 20mA	-	130	-	Deg
Peak Wavelength	λP	IF = 20mA	-	595	-	nm
Dominant Wavelength	λD	IF = 20mA	-	590	-	nm

\*Tolerance of viewing angle: -10 / +5 deg.



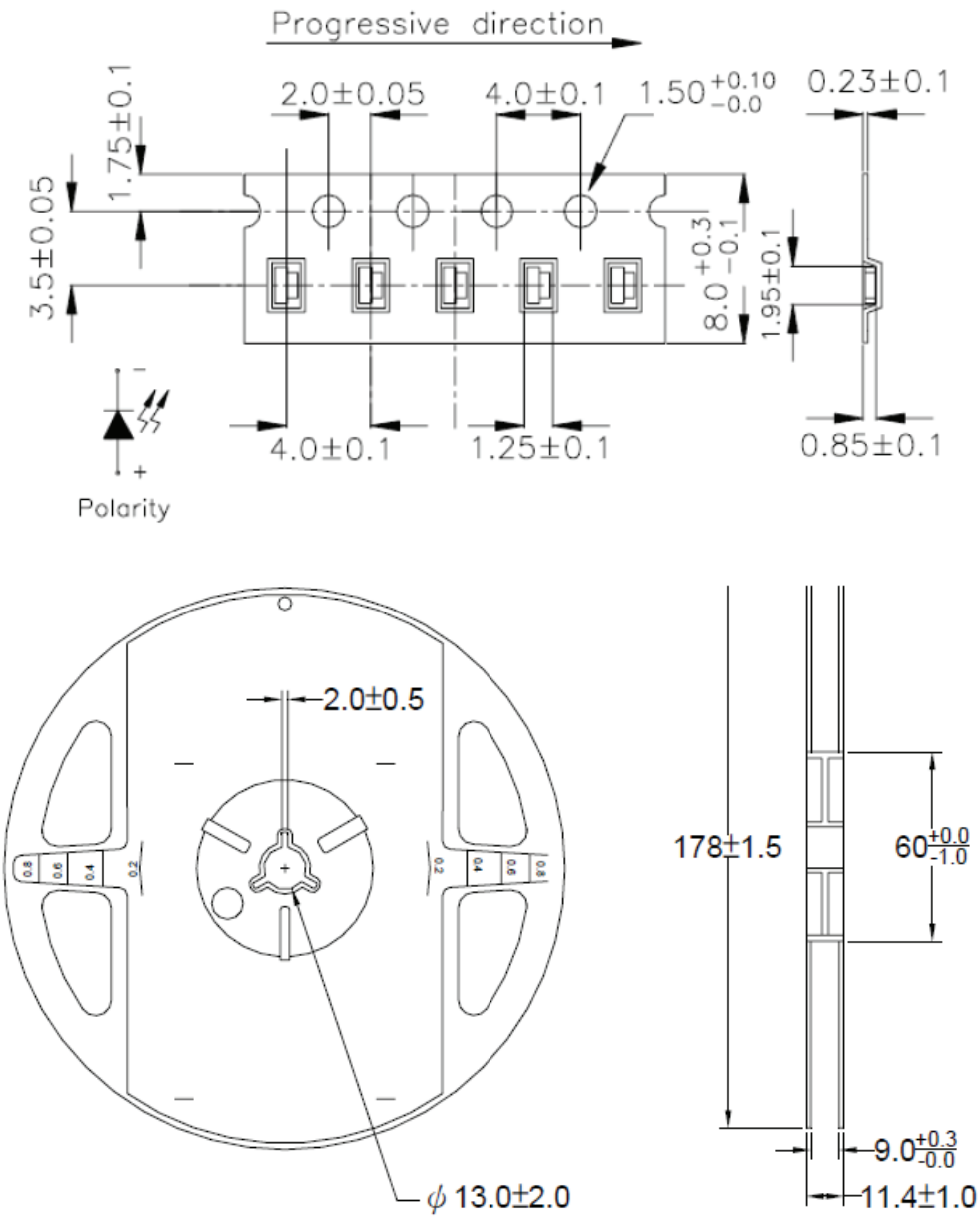
ChromeLED Corp. reserves the right to make changes at any time in order to supply the best product possible. The most current version of this document will always be available at: [www.chromeled.com](http://www.chromeled.com)

## OPTICAL CHARACTERISTIC CURVES



ChromeLED Corp. reserves the right to make changes at any time in order to supply the best product possible. The most current version of this document will always be available at: [www.chromeled.com](http://www.chromeled.com)

# PACKAGING SPECIFICATION


**Notes:**

1. Tolerance unless mentioned is ±0.1mm, Angle ±0.5, Unit=mm.
2. 3000pcs / 7" Reel; 8.0mm Tape



ChromeLED Corp. reserves the right to make changes at any time in order to supply the best product possible. The most current version of this document will always be available at: [www.chromeled.com](http://www.chromeled.com)

## SOLDERING CONDITIONS

### PRECAUTION FOR USE:

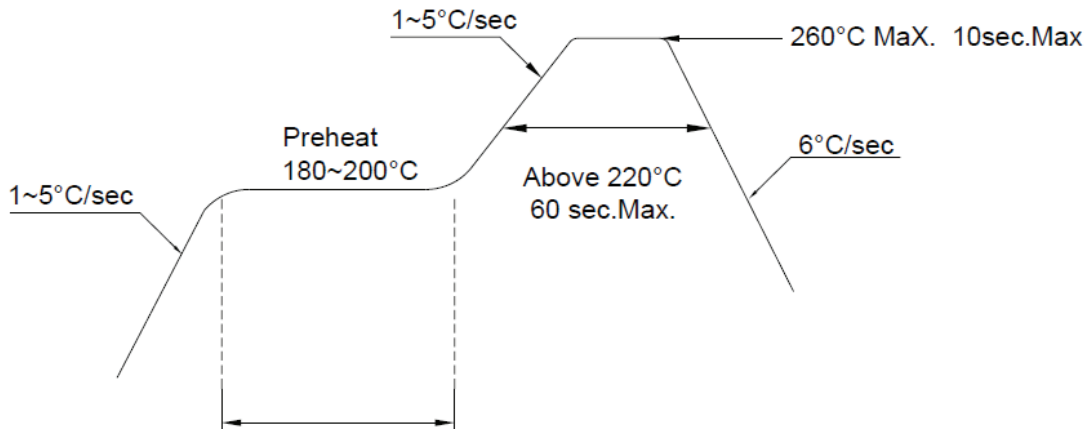
Storage time:

1. Don't open the moisture-resistant bag before LEDs are ready to use.
2. Before use: LEDs should be kept at 30°C or less and 90% RH or less.
3. After use: LEDs floor life is 1 year under 30°C or less and 60% RH or less. If unused LEDs remain, it should be stored in moisture-resistant package.
4. If the LEDs have exceeded the storage time or the moisture absorbent material (silica gel) has faded, the baking treatment of 60±5°C for 24 hrs should be performed.

### Over Current-Protection

The LEDs are sensitive parts, slight voltage shift will cause big current change and will cause burn out. Customer must apply resistors for protection.

### LED SOLDERING



Notes:

1. Reflow soldering should not be done more than two times.
2. When soldering, do not put stress on the LEDs during heating.
3. After soldering, do not warp circuit board.

### REPAIRING

In principle repair should not be done after the LEDs have been soldered. When repairing is unavoidable, it should be confirmed beforehand not to be damaged whether the characteristics of the LEDs by repairing and a double-head soldering iron should be used.



ChromeLED Corp. reserves the right to make changes at any time in order to supply the best product possible. The most current version of this document will always be available at: [www.chromeled.com](http://www.chromeled.com)