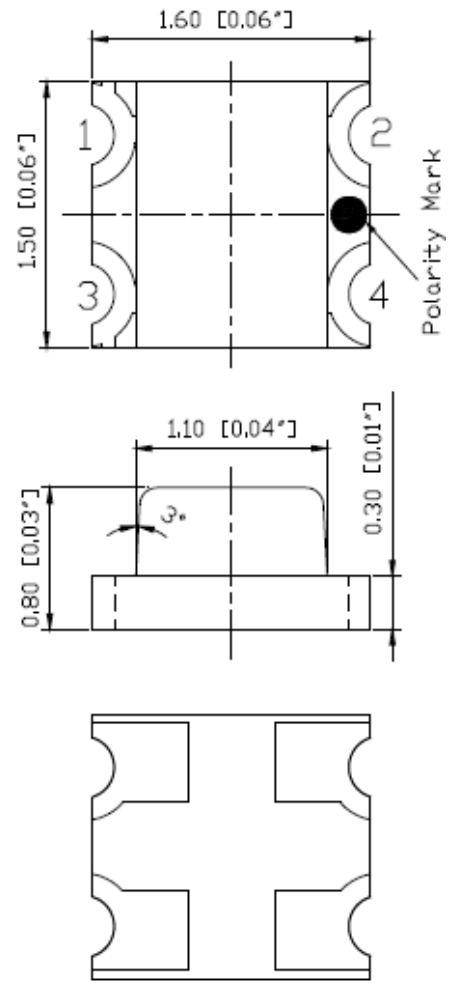
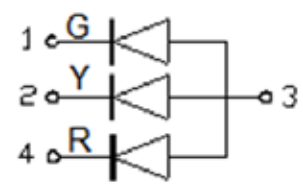
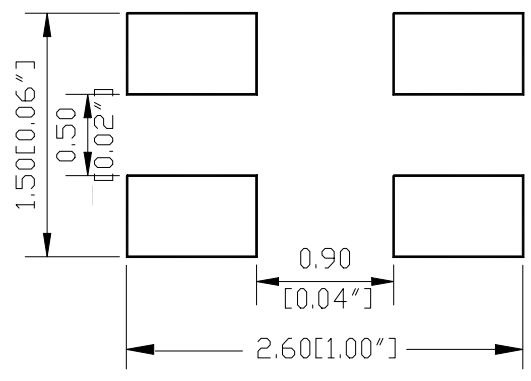


SPECIFICATION **CST66GT2Y2R2C**
PACKAGE OUTLINES

RECOMMEND PAD LAYOUT


- Notes:
1. All dimensions are in millimeters (inches).
 2. Tolerance is $\pm 0.25\text{mm}$ (0.01") unless otherwise noted.
 3. Specifications are subject to change without notice.

| Part Number | Chip Material | Color of Emission | Lens Type | Viewing Angle |
|---------------|---------------|-------------------|-------------|---------------|
| CST66GT2Y2R2C | InGaAlP | Red | Water Clear | 140° |
| | InGaAlP | Yellow | Water Clear | 140° |
| | InGaN | Green | Water Clear | 140° |



ChromeLED Corp. reserves the right to make changes at any time in order to supply the best product possible. The most current version of this document will always be available at: www.chromeled.com

ABSOLUTE MAXIMUM RATINGS
(TA=25°C)

| Parameter | Symbol | Max Rating | | Unit |
|---|--------|------------|----------------|------|
| | | Green | Red/ Yellow | |
| Forward Current | IF | 30 | 30 | mA |
| Reverse Voltage | VR | 5 | 5 | V |
| Power Dissipation | Pd | 111 | 75 | mW |
| Operating Temperature Range | TOP | -40~+80 | | °C |
| Storage Temperature Range | TSTG | -40~+85 | | °C |
| Peak Pulsing Current (tp ≤ 10 μs, duty cycle = 0.005) | IFP | 125 | | mA |

OPTICAL-ELECTRICAL CHARACTERISTICS
(TA=25°C)

| Parameter | Symbol | Test Condition | Color | Value | | | Unit |
|-------------------------|--------|----------------|--------|-------|-----|-----|------|
| | | | | Min | Typ | Max | |
| Luminous Intensity | Iv | IF = 20mA | Red | 80 | 140 | - | mcd |
| | | | Green | 250 | 430 | - | |
| | | | Yellow | 80 | 170 | - | |
| Forward Voltage | VF | IF = 20mA | Red | - | 2.0 | 2.5 | V |
| | | | Green | - | 3.1 | 3.7 | |
| | | | Yellow | - | 2.0 | 2.5 | |
| Viewing Angle at 50% Iv | 2θ1/2 | IF = 20mA | - | - | 140 | - | Deg |
| Dominant Wavelength | λD | IF = 20mA | Red | 615 | 620 | 630 | nm |
| | | | Green | 520 | 525 | 530 | |
| | | | Yellow | 585 | 590 | 595 | |

*Tolerance of viewing angle: -10 / +5 deg.

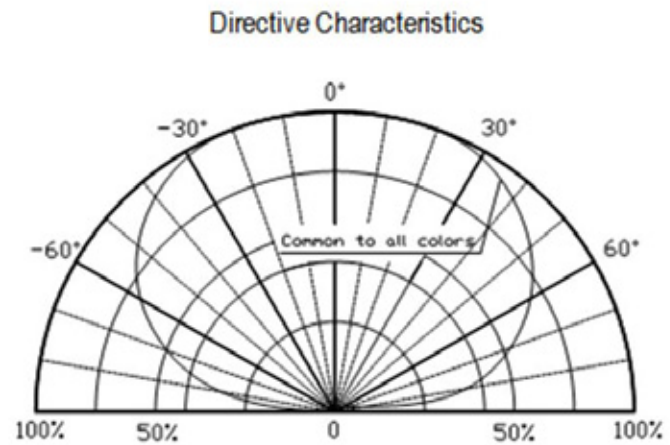
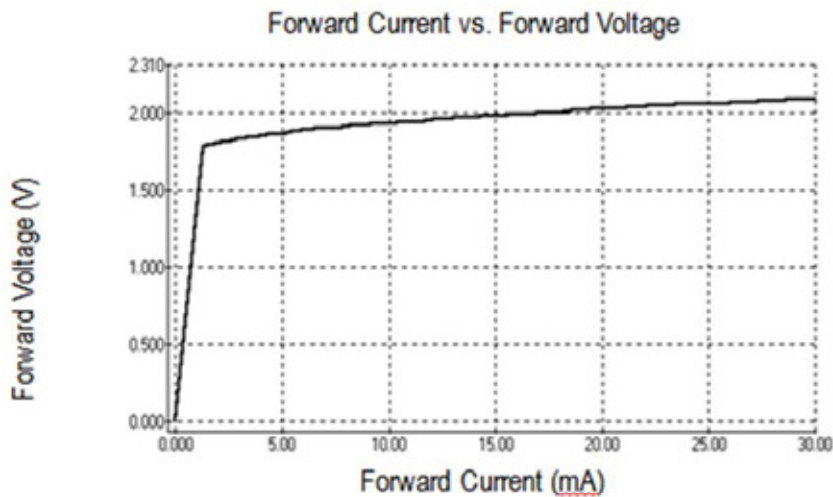
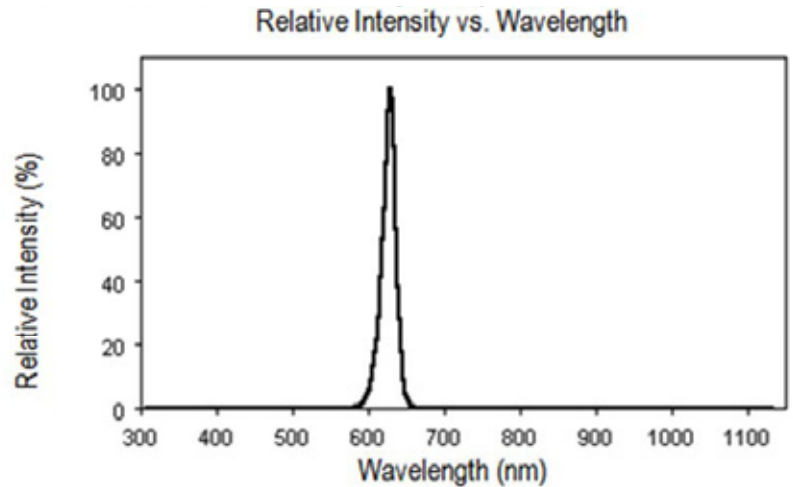

*Tolerance of forward voltage is -/+ 0.05V

*Tolerance of luminous intensity -/+ 1nm



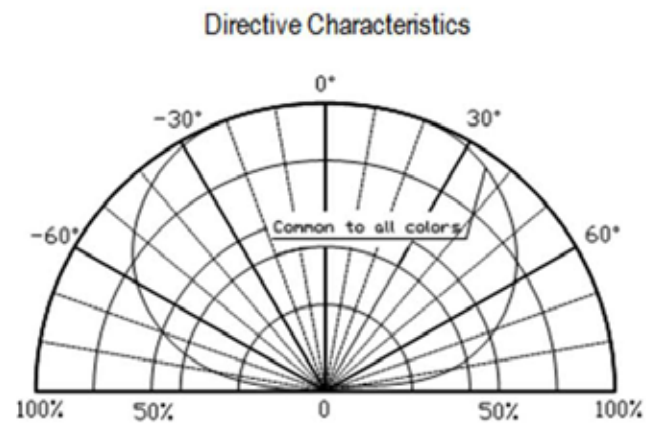
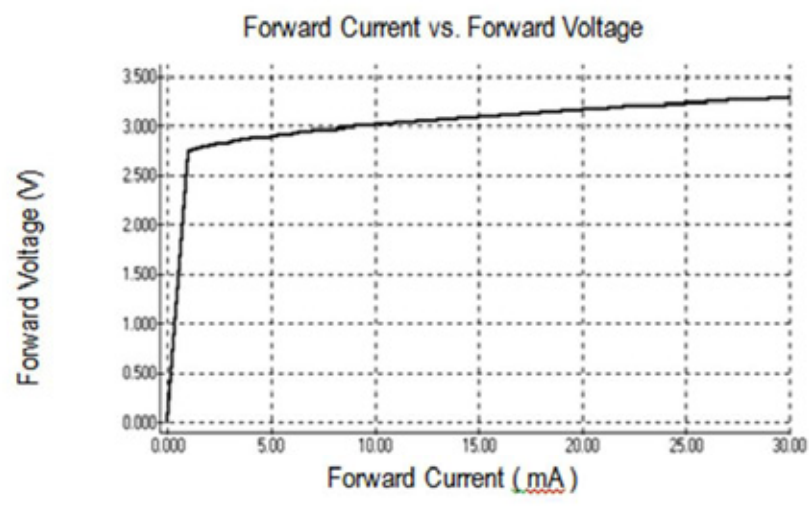
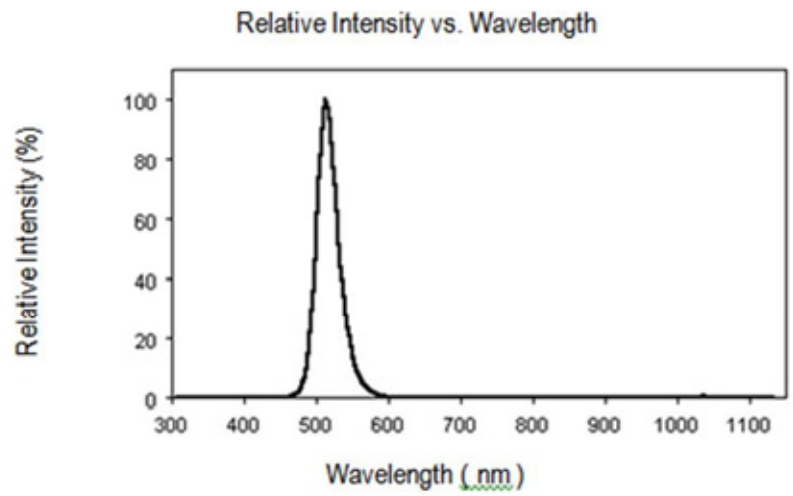
ChromeLED Corp. reserves the right to make changes at any time in order to supply the best product possible. The most current version of this document will always be available at: www.chromeled.com

TYPICAL ELECTRO-OPTICAL CHARACTERISTIC CURVES (RED)

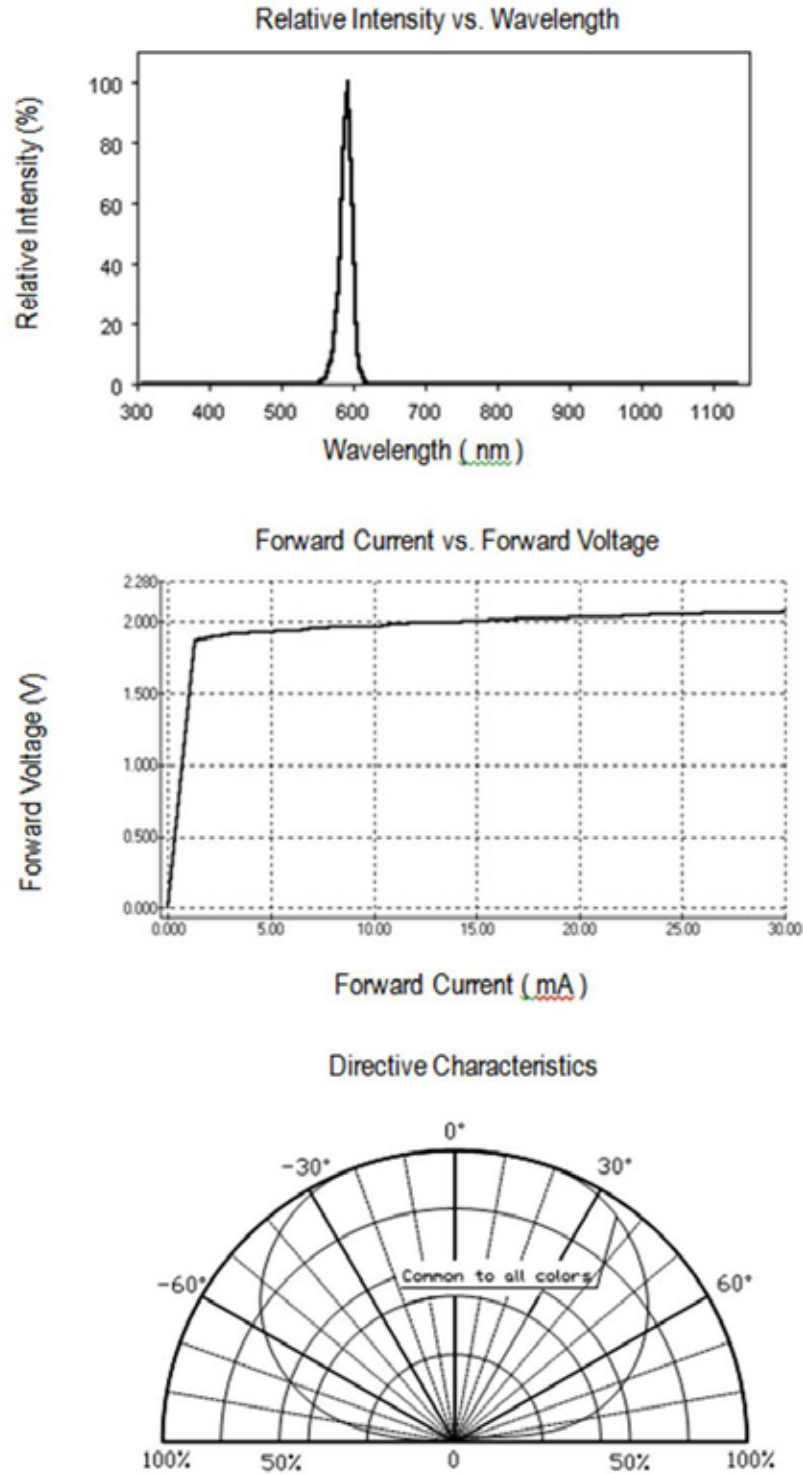
ChromeLED Corp. reserves the right to make changes at any time in order to supply the best product possible. The most current version of this document will always be available at: www.chromeled.com

TYPICAL ELECTRO-OPTICAL CHARACTERISTIC CURVES (GREEN)



ChromeLED Corp. reserves the right to make changes at any time in order to supply the best product possible. The most current version of this document will always be available at: www.chromeled.com

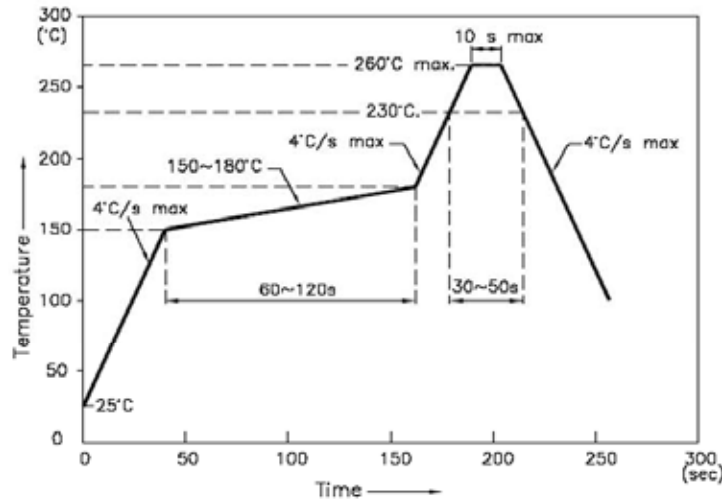
TYPICAL ELECTRO-OPTICAL CHARACTERISTIC CURVES (YELLOW)



ChromeLED Corp. reserves the right to make changes at any time in order to supply the best product possible. The most current version of this document will always be available at: www.chromeled.com

SOLDERING CONDITIONS

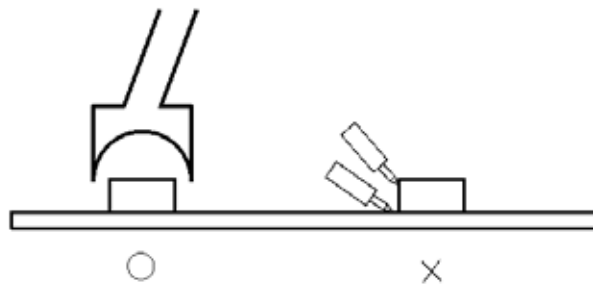
REFLOW PROFILE



1. We recommend the reflow temperature 245°C (±5°C).the maximum soldering temperature should be limited to 260°C.
2. Don't cause stress to the epoxy resin while it is exposed to high temperature.
3. Number of reflow process shall be 2 times or less.
 - Soldering iron
 - Basic spec is ≤ 5sec when 260°C. If temperature is higher, time should be shorter
 - (+10°C → -1sec).Power dissipation of iron should be smaller than 20W, and temperatures should be controllable. Surface temperature of the device should be under 230°C.

Rework

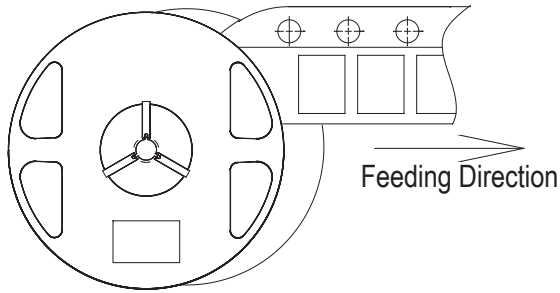
1. Customer must finish rework within 5 sec under 260°C.
2. The head of iron cannot touch copper foil.
3. Twin-head type is pref



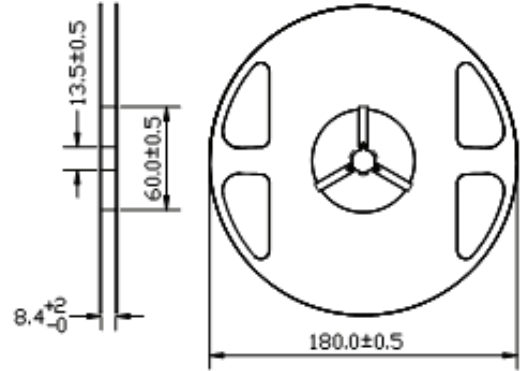
ChromeLED Corp. reserves the right to make changes at any time in order to supply the best product possible. The most current version of this document will always be available at: www.chromeled.com

REEL PACKAGING

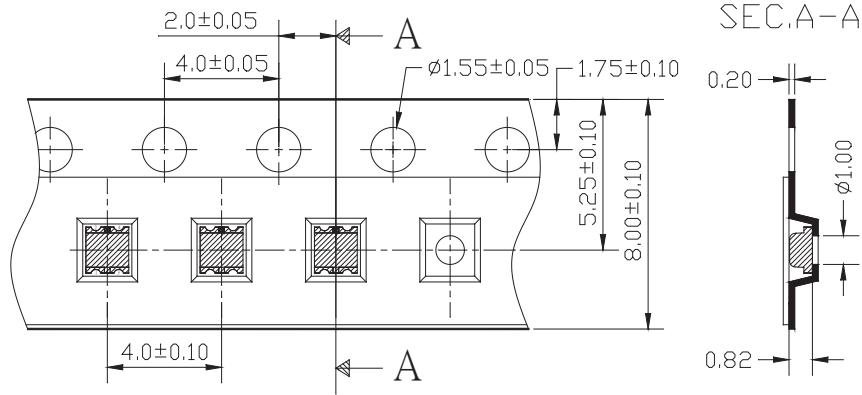
- Feeding Direction



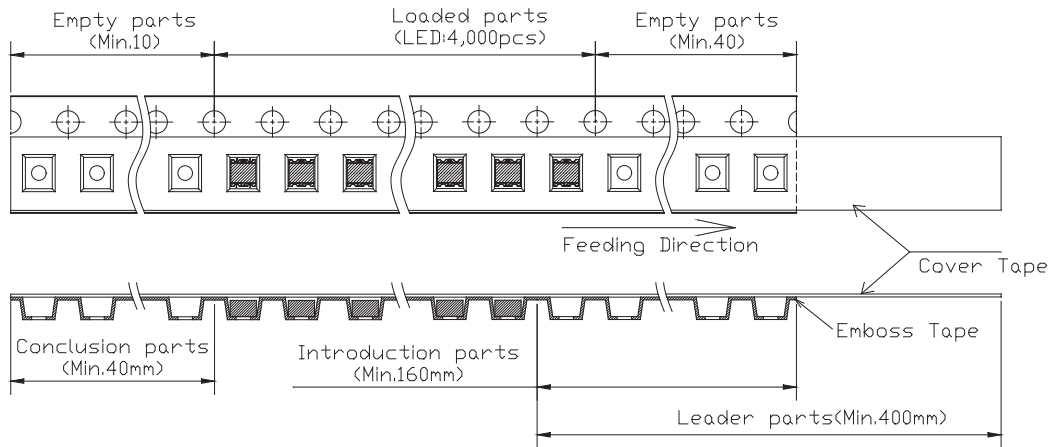
- Dimensions of Reel (Unit: mm)



- Dimensions of Tape (Unit: mm)



- Arrangement of Tape



Notes:

1. Empty component pockets are sealed with top cover tape;
2. The maximum number of missing lamps is two;
3. 4,000pcs/Reel



ChromeLED Corp. reserves the right to make changes at any time in order to supply the best product possible. The most current version of this document will always be available at: www.chromeled.com