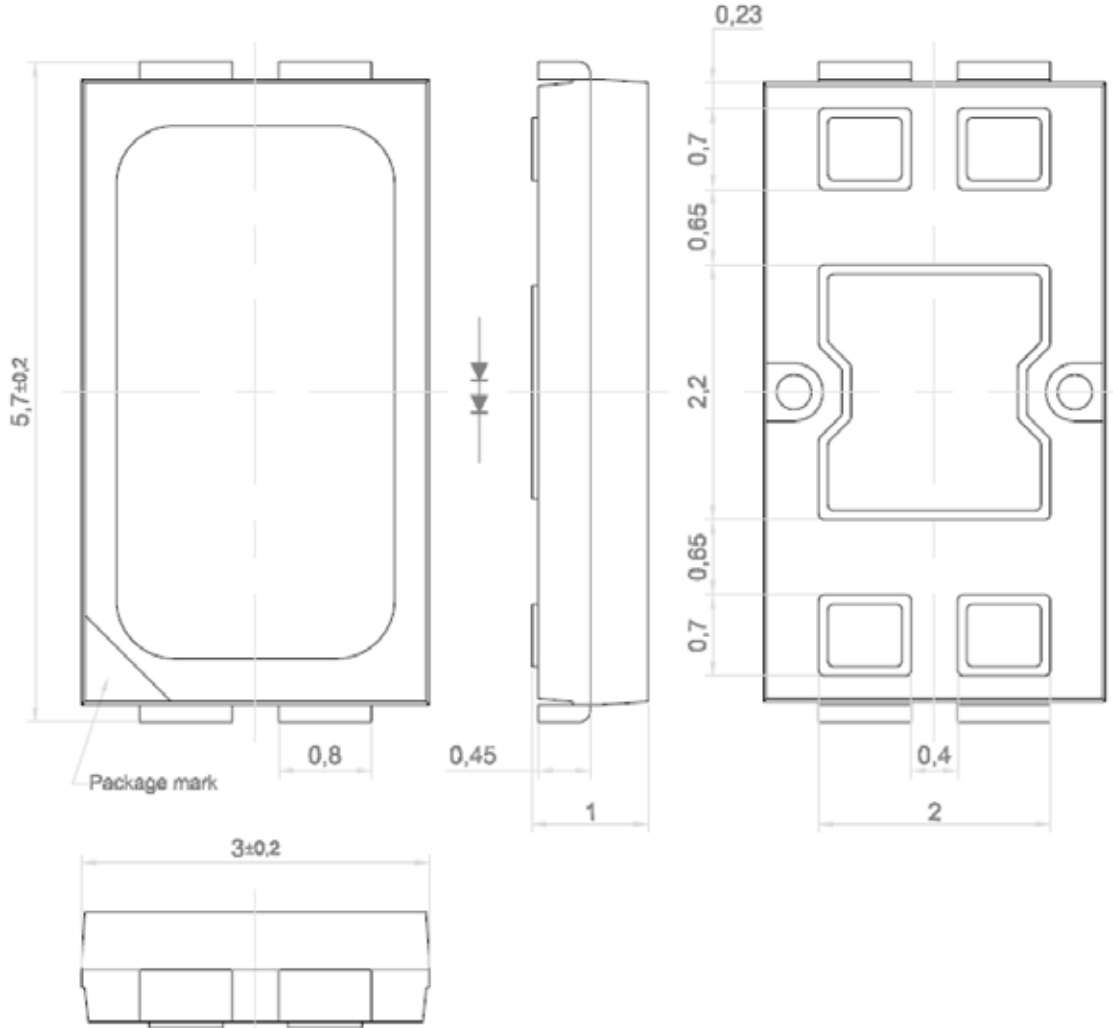


SPECIFICATIONS **CSH563CW3C**
PACKAGE OUTLINES


- Notes:
1. All dimensions are in millimeter (inches).
 2. Tolerance is $\pm 0,25$ mm ($0,01$ "") unless otherwise noted.
 3. Specifications are subject to change without notice.

Part Number	Chip Material	Color of Emission	Lens Type	Viewing Angle
CSH563CW3C	InGaN	Cool White	Yellow	120°



ChromeLED Corp. reserves the right to make changes at any time in order to supply the best product possible. The most current version of this document will always be available at: www.chromeled.com

ABSOLUTE MAXIMUM RATINGS
(TA=25°C)

Parameter	Symbol	Max Rating	Unit
Forward Current	I _F	180	mA
ESD Threshold (HBM)	V	-	V
Reverse Voltage	V	10	V
Junction Temperature	T _J	125	°C
Operating Temperature Range	T _{OP}	-40~+100	°C
Storage Temperature Range	T _{STG}	-40~+100	°C
Peak Pulsing Current (1/10 duty f = 10KHz)	I _{FP}	200	mA
Soldering Temperature	T _{SOL}	Max 260°C for 5 sec Max	

OPTICAL-ELECTRICAL CHARACTERISTICS
(TA=25°C)

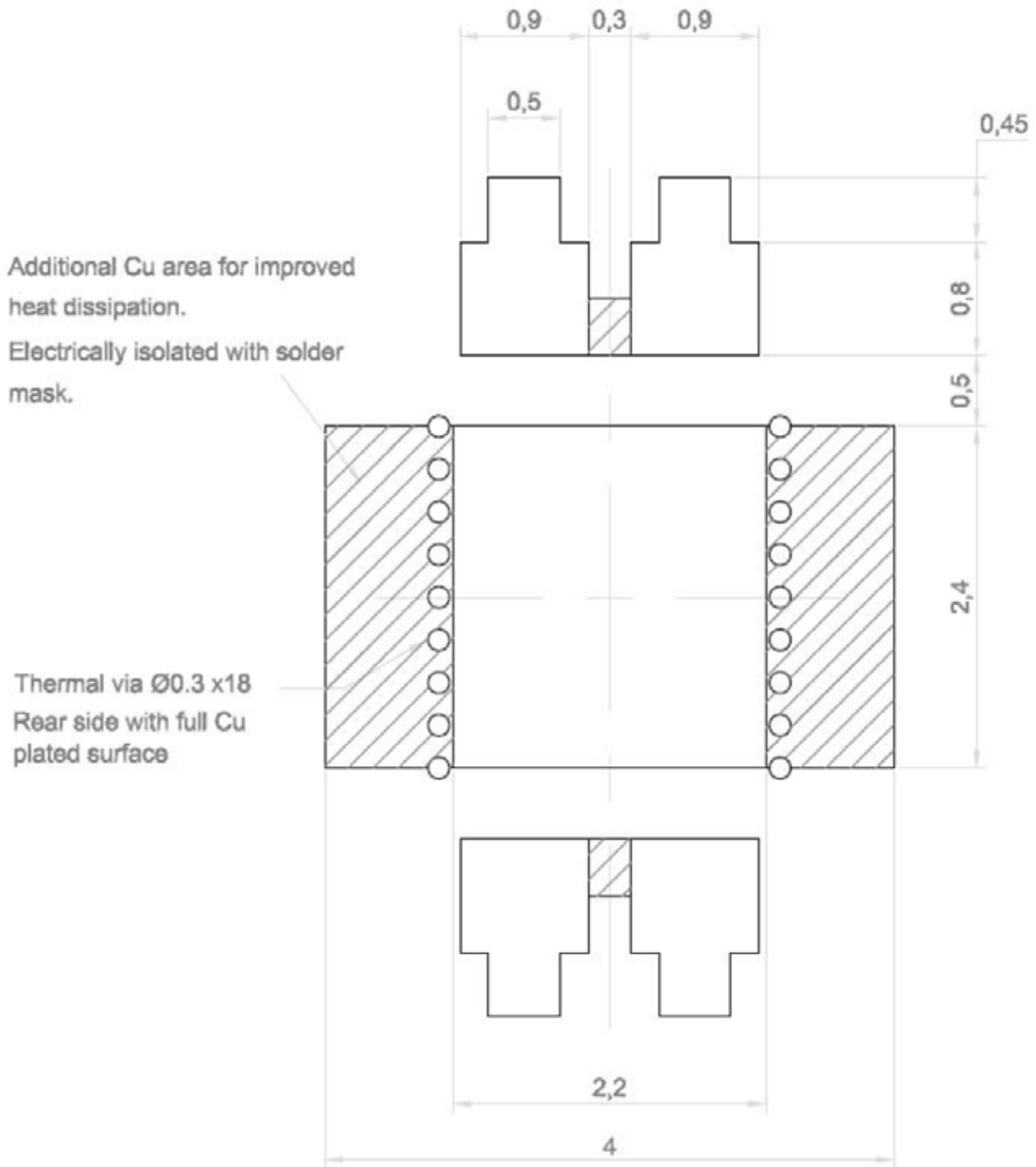
Parameter	Symbol	Test Condition	Value			Unit
			Min	Typ	Max	
Chromaticity Coordinate	X	I _F = 150mA	-	0.32	-	-
Chromaticity Coordinate	Y	I _F = 150mA	-	0.33	-	-
Reverse Leakage Current	I _R	V _R = 5V	-	-	10	μA
Forward Voltage	V _F	I _F = 150mA	-	6.5	7.2	V
Luminous Intensity	I _v	I _F = 150mA	87.4	108	-	lm

*Tolerance of viewing angle: -10 / +5 deg.



ChromeLED Corp. reserves the right to make changes at any time in order to supply the best product possible. The most current version of this document will always be available at: www.chromeled.com

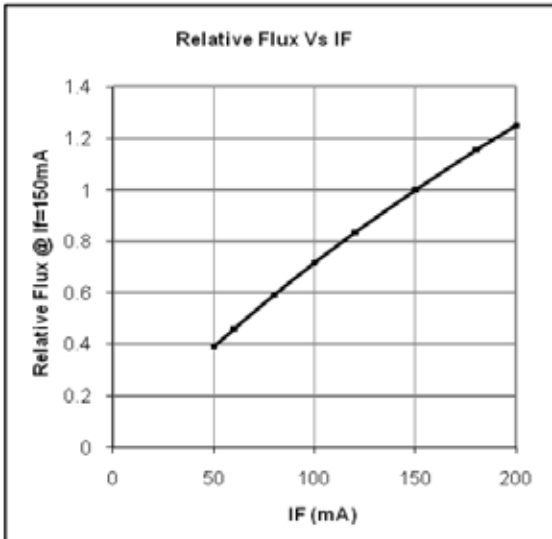
RECOMMENDED SOLDER PAD



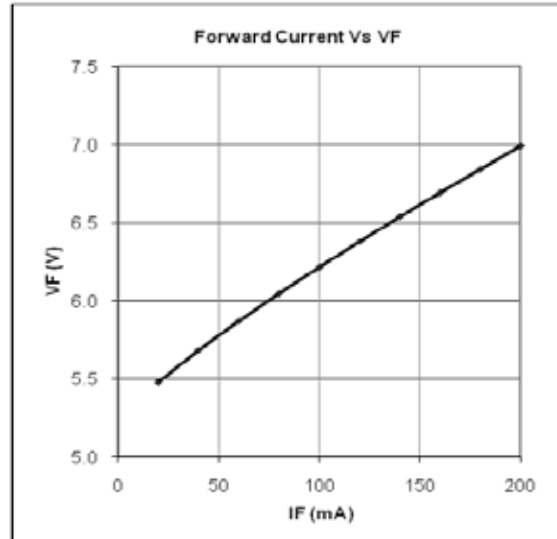
ChromeLED Corp. reserves the right to make changes at any time in order to supply the best product possible. The most current version of this document will always be available at: www.chromeled.com

OPTICAL CHARACTERISTIC CURVES

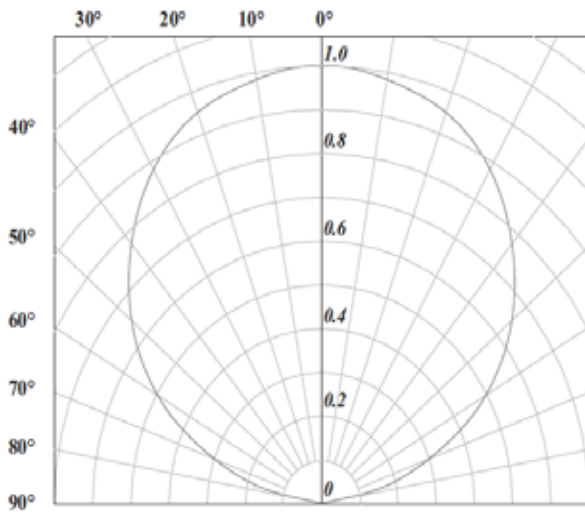
Relative flux vs. forward current



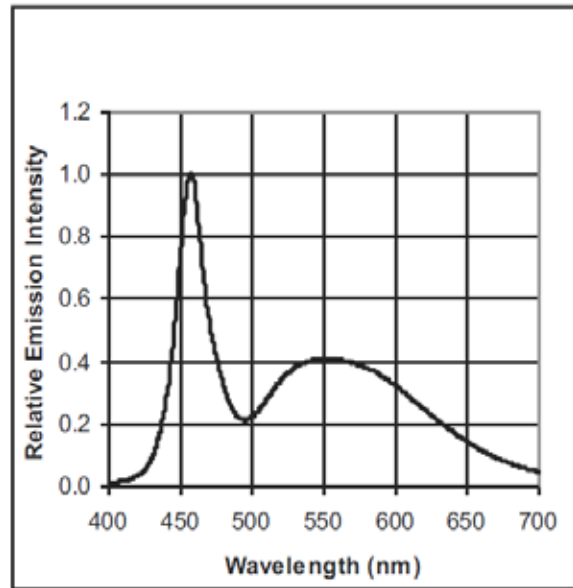
Forward voltage vs. forward current



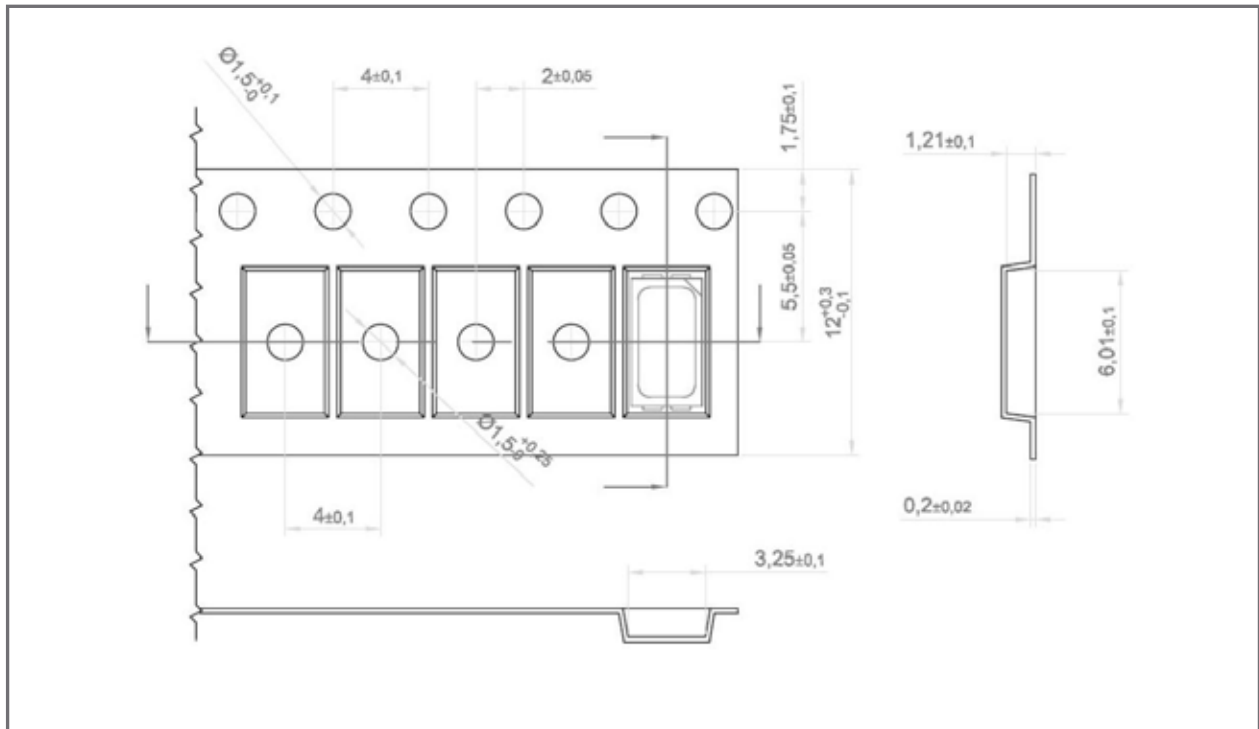
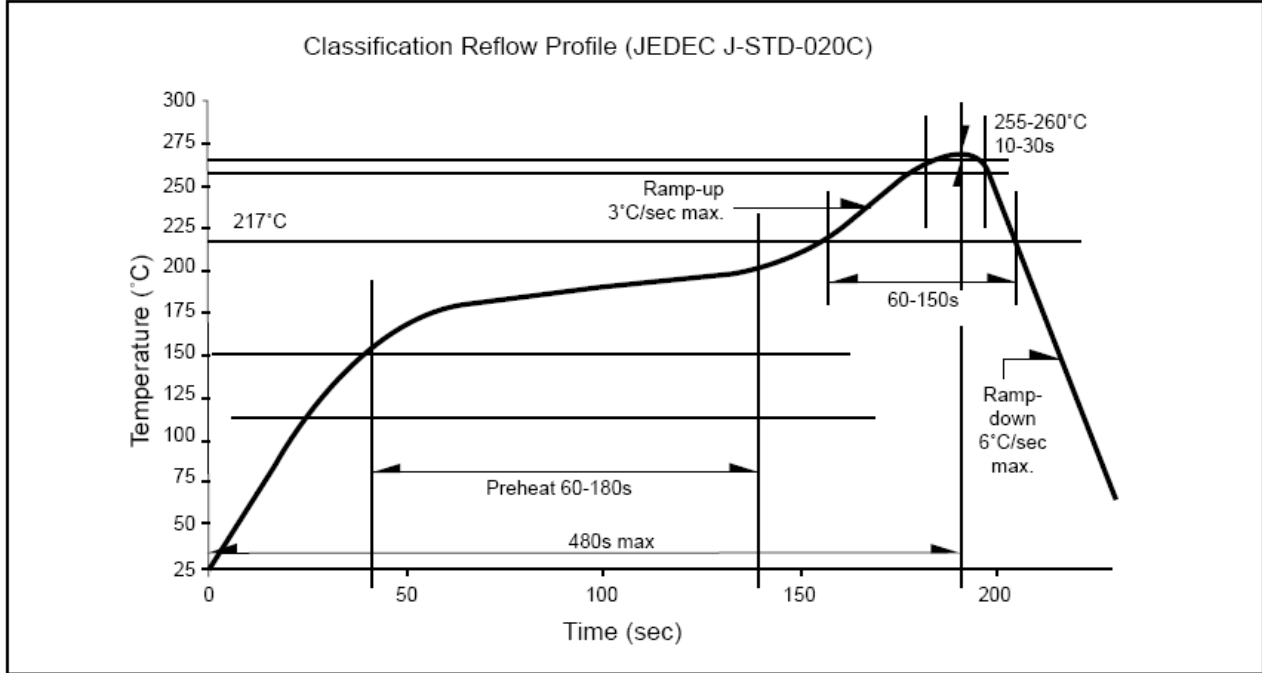
Radiation pattern.



Color Spectrum.



ChromeLED Corp. reserves the right to make changes at any time in order to supply the best product possible. The most current version of this document will always be available at: www.chromeled.com

SOLDERING CONDITIONS & TAPING ORIENTATION
RECOMMENDED Pb-Free Soldering Profile


ChromeLED Corp. reserves the right to make changes at any time in order to supply the best product possible. The most current version of this document will always be available at: www.chromeled.com